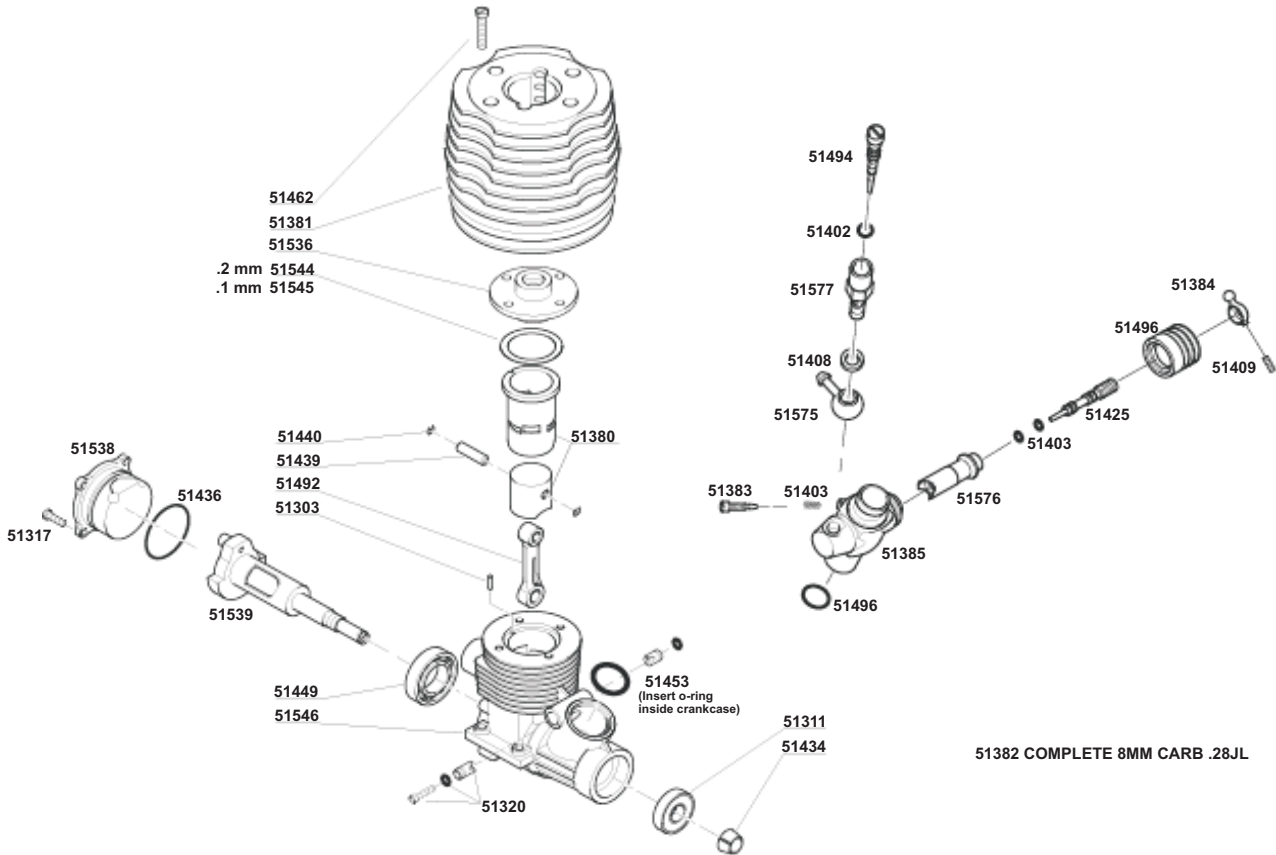




PICCO .28JL TEAM TURBO PART #51234

TECHNICAL DATA

- Cubic capacity4.60cc
- Stroke.....17.6
- Bore.....18.35
- Rpm.....37000
- Hp.....3.6
- Weight.....350gr



51234 .28 JL TEAM TURBO PARTS LIST

OFNA	DESCRIPTION	RETAIL	OFNA	DESCRIPTION	RETAIL
51303	PIN REF., CYLINDER	1.95	51440	RETAINER, WRIST PIN CLIPS	1.95
51311	BEARING,FRT SPT & CMP.21,.21P7	29.95	51449	BEARING, 14mm INSIDE .26,21P7R	59.95
51317	SCREWS, REAR COVER, 4 PCS.	4.95	51453	SEALS, O-RINGS, CARB	1.95
51320	CARB LOCKING PIN .21-.28	8.95	51462	SCREWS, HEAD, COMP .21, .21P7R	7.95
51380	PISTON/SLEEVE .28 JL TURBO	157.95	51492	CONNECTING ROD FOR J.28 P.28	53.95
51381	HEAD, .28 JL TEAM TURBO	143.95	51494	NEEDLE, MASTER P7,P9,28JL	3.95
51382	CARBURETOR, NEW 8MM 2009	119.95	51496	BARREL BOOT, SILICONE	7.95
51382	CARBURETOR, NEW 8MM 2009	119.95	51523	O-RING, CARB. 2PCS.	0.99
51383	IDLE SCREW .28 JL NEW 2009	4.95	51536	INSERT, 28 HEAD TURBO PLUG	39.95
51384	BALL JOINT CARB .28JL	15.95	51538	COVER, 28 REAR, FACTORY TEAM	26.95
51385	CARB. BODY 8MM .28JL NEW	66.95	51539	CRANKSHAFT .28 FACTORY TEAM	117.95
51402	O-RING, M.NEEDLE, 2 PCS.	1.95	51544	HEAD SHIM .2mm .28	2.95
51403	O-RINGS, 4x2mm 6 PCS.	4.95	51545	HEAD SHIM .1mm .28	2.95
51408	WASHERS, ALUM. 2 PCS.	1.95	51546	CRANKCASE .28	159.95
51409	SET SCREW 3x3mm	0.95	51575	FUEL FITTING PLASTIC .21B .28JL	1.95
51425	MIN NEEDLE, 9mm CARB, NEW	12.95	51576	DRUM FOR 8MM CARB. .21B	18.95
51434	CONE, SLIT, ALL ENGINES	1.95	51577	NEEDLE, MAIN HOUSING .21B	6.95
51436	SEAL, REAR COVER, ALL ENGINES	2.95	51914	SEAL .21 FOR PICCO MANIFOLD	6.95
51439	WRIST PIN, .26-.28 PICCO	8.95	51915	SEAL .21 FOR OFNA & NOVA. MAN.	6.95

TO: OFNA TECHNICAL SUPPORT

7 VANDERBILT, IRVINE, CA 92618

TODAY'S DATE: month _____ day _____

1. Print out form.
2. Fill out the form completely.
3. Make a copy of purchase receipt. All replacements/repairs will not be processed, unless accompanied by proof that item(s) was purchased in the last **30** days.
4. Call OFNA technical support at (949)586-2910 for assistance.

1. Your name

2. Your address:

3. Your Phone Number

(____) _____

4. Your e-mail address:

5. Summary of your problem *(check lines)*:

a _____ part(s) is missing from my kit

b _____ part(s) seems to be defective

c _____ other problem

6. Name of kit / part *(on tag or end of box)*

7. Kit/part number *(on tag or end of box)*

8. Purchased from *(store name)*

a. Store phone: (____) _____

b. _____ Item was a gift?

9. If a part is missing from the kit, circle the appropriate answers:

a. Yes / No: Is kit box damaged?

b. Yes / No: Factory Seal sticker was secure.

c. Yes / No: I am the original owner.

d. Yes / No: I have contacted the dealer first.

10. Describe your issue fully and include any part numbers:

Failure to fill out this form completely will cause a delay in processing!

11. Affix proof of purchase on second page. **All replacement / repairs will not be processed unless accompanied by proof that item(s) was purchased in the last 30 days.**

Can't find Proof of Purchase?

A. If you lost the store receipt, ask the store if they will give you a new one.

B. We do not accept the following as a substitute: Hand written receipts, **ebay** transaction numbers/forms or credit card statements.

12. Send in form with your defective product, as instructed to do by the Ofna technician, (Name) _____ you spoke to. (949)586-2910